

PUBLIC AWARENESS MESSAGE

IF YOU THINK THERE IS A GAS LEAK

CALL 911 AND IMMEDIATELY AFTER,
CALL OUR EMERGENCY LINE
559.660.2091

Do not make the phone call from the area where the gas leak is present. Do not light such items as matches, cigarettes, or use any device that may generate a spark such as electrical switches, telephones (cell and land lines), doorbells, automobiles or other engines, etc. Extinguish all flames and evacuate the building to a safe distance.

PLEASE READ CAREFULLY.

This notice is to inform the customers of **Shaver Lake Propane (SLP)** of the hazards associated with the propane gas pipeline system and how to respond if a gas leak is detected.

Our goal is to ensure that propane gas is provided to the customers for their personal or business use in a safe and reliable manner.



**KNOW
WHAT'S BELOW
CALL
BEFORE YOU DIG**

The greatest risk to underground gas pipelines is damage caused during excavation. Even a minor impact with the pipeline could compromise the piping and result in a leak.

PIPELINE OPERATIONS

The propane gas pipeline system is owned and operated by **SLP**. The pipeline system is designed to distribute gas to the customers which is commonly used for heating and cooking. In some cases the pipeline system also distributes gas to commercial customers.

The propane pipeline system is maintained by qualified **SLP** individuals and contractors in accordance with the Operations, Maintenance, and Emergency Plan. This plan contains procedures for safely operating, maintaining and monitoring the system. The California Public Utilities Commission inspects the gas pipeline system for compliance with Federal rules and regulations.

Gas can leak from pipeline facilities damaged due to corrosion, outside force, natural events, or equipment failure, etc. Because propane gas is a flammable commodity, gas leaks, under certain circumstances have the potential to cause harm.

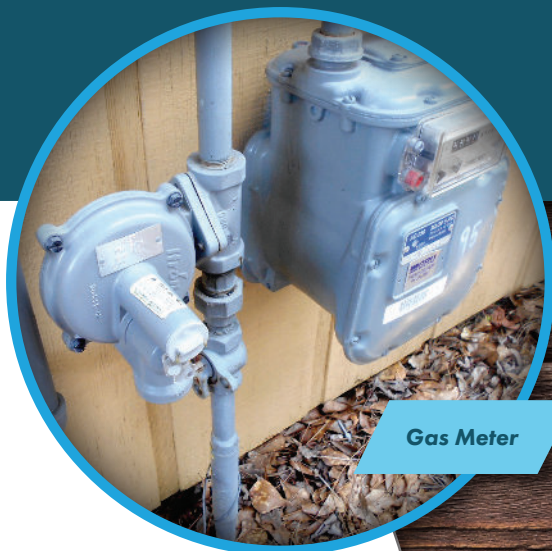
The gas system is leak surveyed in accordance with Federal regulations. All hazardous leaks are repaired. All main valves are inspected to ensure that they are operable. The gas system is patrolled on a routine basis to ensure that hazardous conditions such as atmospheric corrosion, improper care of discontinued services and customer lines, inadequate support of meters and pipeline components, etc., are noted and corrected. The gas pipeline is susceptible to damage due to outside forces such as those caused by excavation, vehicular traffic, or excessive loads placed on meter set assemblies. Restricted access to main valves and meter set assemblies could result in severe consequences in the event of an emergency.

ADDITIONAL SAFETY INSTRUCTIONS

- Do not park vehicles near meters or gas pipelines that are not protected by barriers.
- Do not remove meter supports or place heavy items on top of meter set assemblies.
- Do not restrict access to valves or meter set assemblies.
- Please inform us of gas meters that are vulnerable to vehicular damage or need supports.
- Customers should also notify us of other potential hazards they notice.

RECOGNIZING A GAS LEAK

- **ODOR:** Propane gas is colorless, odorless, tasteless and non-toxic. An additive in the gas gives it a distinctive odor (similar to rotting eggs or dead animal smell).
- **VEGETATION:** Propane gas leaking from an underground pipeline can destroy vegetation by starving the roots of air and water. An unusual dry patch or vegetation, within an otherwise green area, could indicate a below ground leak.
- **SOUND:** A blowing, or hissing sound could indicate the presence of a gas leak.
- **BUBBLING WATER:** underground pipelines in flooded areas may cause bubbles in the water as the gas rises to the surface.
- **FUNGUS LIKE GROWTH:** Gas leaks in valve boxes, manholes, etc., may develop a fungus-like growth that is generally white in color.



Gas Meter



Transmission Pipeline



Pipeline Maintenance



ShaverLake
PROPANE

www.ShaverLakePropane.com
P.O. Box 447, Auberry, CA 93602



DID YOU KNOW?

**SAFETY
INFORMATION**
For Communities with
Propane Gas Pipelines



ShaverLake
PROPANE

FOR GENERAL INFORMATION CALL 559.841.3437