

Managing a vacation or second home in a high snowfall area often requires the support of local contractors. If you rely on a snow removal service, make sure your association, property management company, and any contractors are aware of the precise locations of your propane regulator, lines, and meter. Uninformed service providers can run over piping or dislodge meters and gas equipment.

You may also wish to prepare a letter with a diagram of your propane system to share with all parties. It may be helpful to establish a suitable area for snow collection. Make sure your letter covers any specific property needs and that it includes your contact information in case of an emergency.

Upon your return, if you discover any damage to your propane system—or smell gas—exit the property immediately and call 911 and then your local propane retailer.

Property owners and managers should keep their contact information current with their propane retailer, homeowner association, and neighbors. In an emergency situation, it is important that emergency personnel be able to contact the appropriate property owners.

In high snowfall regions, a little advance planning can go a long way. Consider your needs before the start of the winter season, and make your plans accordingly.

Propane is a safe, reliable, and efficient fuel that will provide for your comfort during the season. The measures you take to protect your system will help ensure its safety, as well as that of your home and family.

Important Contacts

POLICE: 911	FIRE DEPARTMENT: 911
------------------------------	---------------------------------------

PROPANE RETAILER:

ShaverLake Propane
Emergency # (559) 600-2091

For more information, please visit:
www.usepropane.com

Important **PROPANE**
SAFETY INFORMATION

© 2011 PROPANE EDUCATION & RESEARCH COUNCIL | PRC 000017

Safeguarding Your Home for Winter



Essential Propane Safety Information for High Snowfall Areas

The purpose of this brochure is to provide information you need to know about propane safety and how to keep your family safe in areas that experience significant snowfall.

PROPANE
EXCEPTIONAL ENERGY®

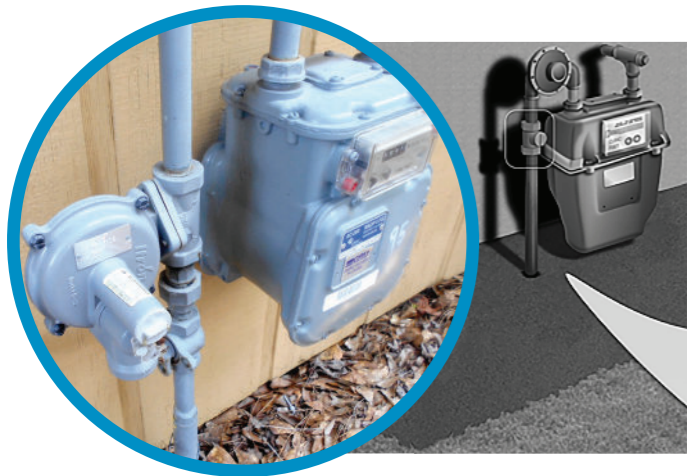
UNDERSTAND Your Home's Propane System

Winters in high snowfall areas can be some of the most magnificent, but they can also be the most challenging. Accumulated snow and ice has the potential to damage your propane system. While you can't predict the first snowstorm or hazardous weather condition, you can take measures to plan for them.

Snowstorms require prompt attention, but your safety comes first. Use caution in the areas surrounding your home after the storm.

Get to know your propane system.

If you are not familiar with your propane system, take a few minutes to review it. Identify core components—regulators, meter, piping, and supply valves—as well as any appliance vents. Be sure you know where your gas supply valve is located, in case you need to close it in the event of an emergency. For more information, contact your propane retailer.



PREPARE Before the First Snowfall

Mark your meter and regulator.

Mark your meter with a brightly colored stake or flag taller than the maximum anticipated snow depth. Check local ordinances about marking meters, and follow any rules applicable to your jurisdiction. It is important to mark your meter and equipment to enable emergency and propane service personnel to locate it at all times.

Designate an area to pile any accumulation of snow safely away from any propane equipment. Advise snow removal companies of the location of your propane meter and equipment.

TAKE ACTION During & After Snowstorms

Keep snow and ice from accumulating on propane equipment.

If pipes freeze or crack, propane can leak creating a potentially dangerous situation. Gently brush away snow or ice that has accumulated around the meter, regulator, and any other piping. Do this using a broom or by hand. If you must use a shovel, use extreme caution around all equipment. If you notice any snow or ice buildup that cannot be removed easily, contact your propane supplier immediately. DO NOT attempt to remove snow or ice by kicking or hitting equipment.

Be alert to snow build-up on rooftops and other areas.

Frequently check where snow or ice collect on your roof, structure, or nearby trees and clear it if you believe it might fall on any part of your propane system. Heavy accumulations of snow or ice falling on regulators, meters, piping, or valves may cause damage that could result in a gas leak.

In high snowfall areas, drifting snow and snow and ice sliding off the roof may require additional regulator and vent protection. Consider installing snow protection or a "snow shelter" above your meter or regulator to prevent snow and ice damage. Contact your propane retailer for more information.

Keep vents clear.

Appliance vents and chimney flues must ALWAYS be clear of snow or ice. Some homes may have "direct" vents, which are close to the ground. Improper venting can cause carbon monoxide to become trapped in your home, causing serious illness or even death.

Clear driveways and pathways to meter/regulator equipment

Keep the meter area and a path to the meter free of snow. When plowing, snow blowing, or shoveling, do not push or pile snow around your meter, regulator, or piping.

STAY ALERT At All Times

If you smell gas:



1. NO FLAMES OR SPARKS!

Immediately put out all smoking materials and other open flames. Do not operate lights, appliances, telephones, or cell phones. Flames or sparks from these sources can trigger an explosion or a fire.



2. LEAVE THE AREA IMMEDIATELY!

Get everyone out of the building or area where you suspect gas is leaking.



3. SHUT OFF THE GAS.

Turn off the main gas supply valve on your meter if it is safe to do so. To close the valve, turn it to the right (clockwise), a quarter turn or follow indication on valve.



4. REPORT THE LEAK.

From a neighbor's home or other nearby building away from the gas leak, immediately call 911 and then your propane retailer.



5. DO NOT RETURN TO THE BUILDING OR THE AREA

until your propane retailer determines that it is safe to do so.



6. GET YOUR SYSTEM CHECKED.

Before you attempt to use any of your propane appliances, your propane retailer or a qualified service technician must check your entire system to ensure that it is leak-free.